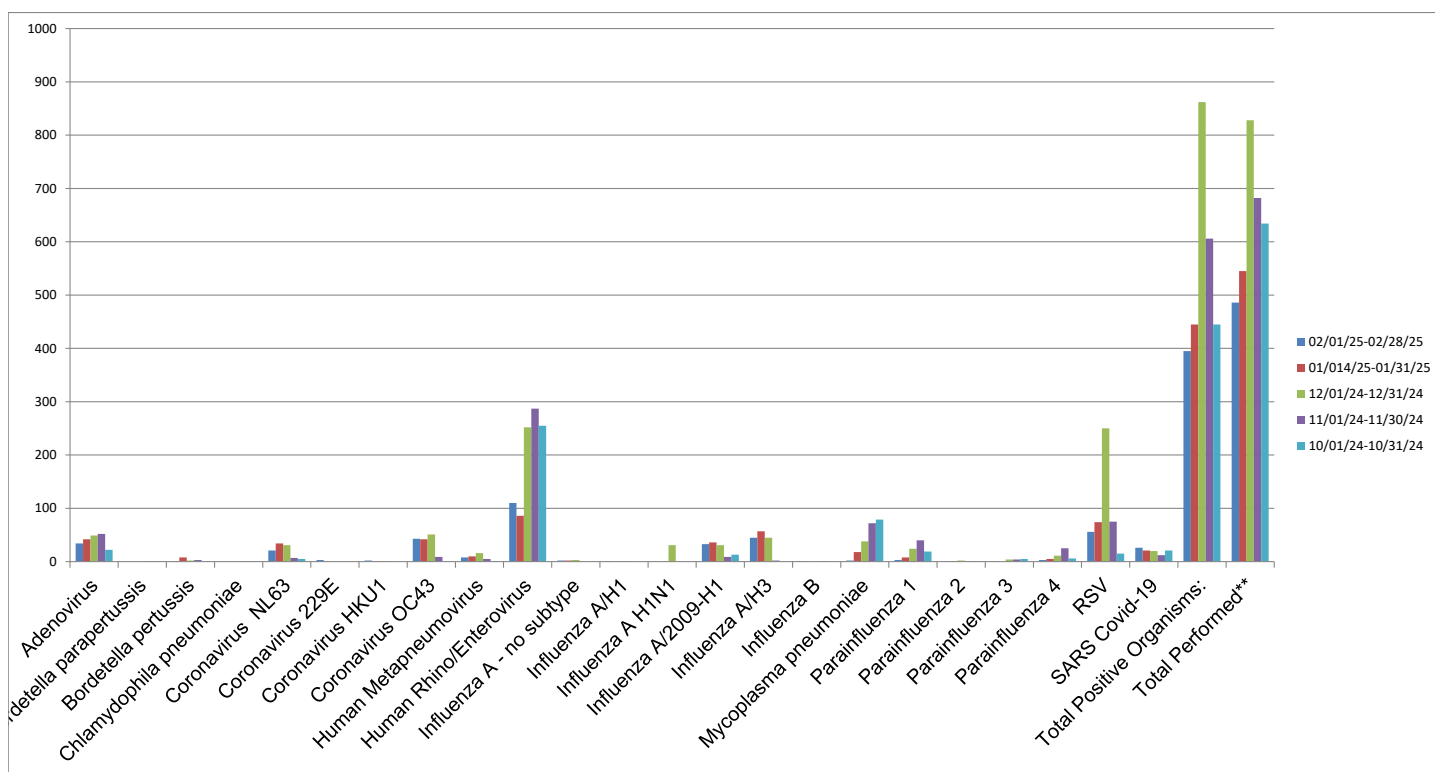


Respiratory Pathogen PCR



Organism	02/01/25-02/28/25	01/01/25-01/31/25	12/01/24-12/31/24	11/01/24-11/30/24	10/01/24-10/31/24
Adenovirus	34	42	49	52	22
Bordetella parapertussis	0	0	0	1	1
Bordetella pertussis	1	8	2	3	1
Chlamydia pneumoniae	0	0	0	1	1
Coronavirus NL63	21	34	31	7	5
Coronavirus 229E	3	0	0	0	0
Coronavirus HKU1	2	1	1	0	0
Coronavirus OC43	43	42	51	9	0
Human Metapneumovirus	8	10	16	5	1
Human Rhino/Enterovirus	110	86	252	287	255
Influenza A - no subtype	2	2	3	0	0
Influenza A/H1	1	0	1	0	0
Influenza A H1N1	0	0	31	0	0
Influenza A/2009-H1	33	36	31	9	13
Influenza A/H3	45	57	45	2	0
Influenza B	1	0	0	1	0
Mycoplasma pneumoniae	2	18	38	72	79
Parainfluenza 1	3	8	24	40	19
Parainfluenza 2	0	1	2	1	1
Parainfluenza 3	1	0	4	4	5
Parainfluenza 4	3	5	11	25	6
RSV	56	74	250	75	15
SARS Covid-19	26	21	20	12	21
Total Positive Organisms:	395	445	862	606	445
Total Performed**	486	545	828	682	634

Test may have multiple organisms

**Consist of RESPIRATORY PATHOGEN PN PCR# (full panel) and RESPIRATORY PATHOGEN PN I PCR# (11 TARGET)